

Assessment Report of the EIS

The Office of the Coordinator General (OCG) will collate and review all comments and advice received on the EIS. The OCG will then prepare a report on the EIS, considering all properly made public submissions when making a recommendation in relation to the approval of the SGCP. The Coordinator General's report on the EIS is published on the department's website. For further information regarding the SGCP EIS consultation, public submission and reporting process, please refer to <http://www.deedi.qld.gov.au/cg/>



www.metserve.com.au



ENVIRONMENTAL IMPACT STATEMENT
South Galilee Coal Project
FACT Sheet # 4



CONTACT US

If you require more information or have any questions or concerns about the SGCP, please contact us.

M: South Galilee Coal Project
Stakeholder & Community Engagement Team
MET Serve Pty Ltd
PO Box 306, Fortitude Valley, QLD 4006
E: info@southgalilee.com.au
P: 1800 214 543 (free call in Australia except from mobile phones)
W: www.southgalilee.com.au

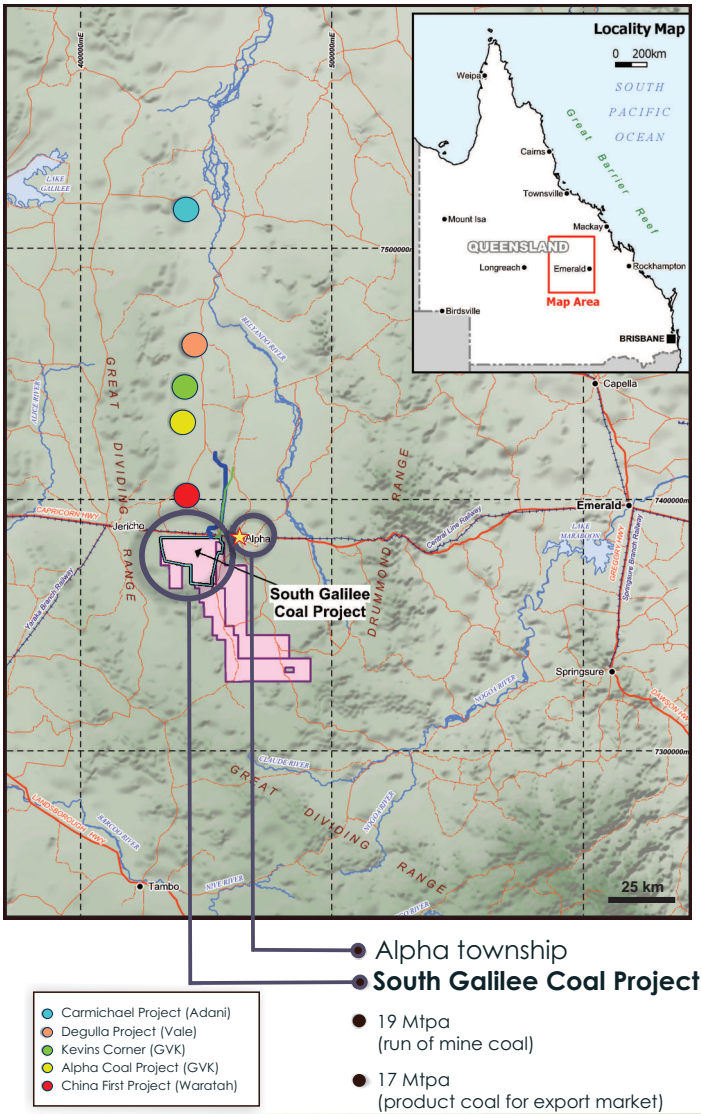


May 2012



South Galilee Coal Project

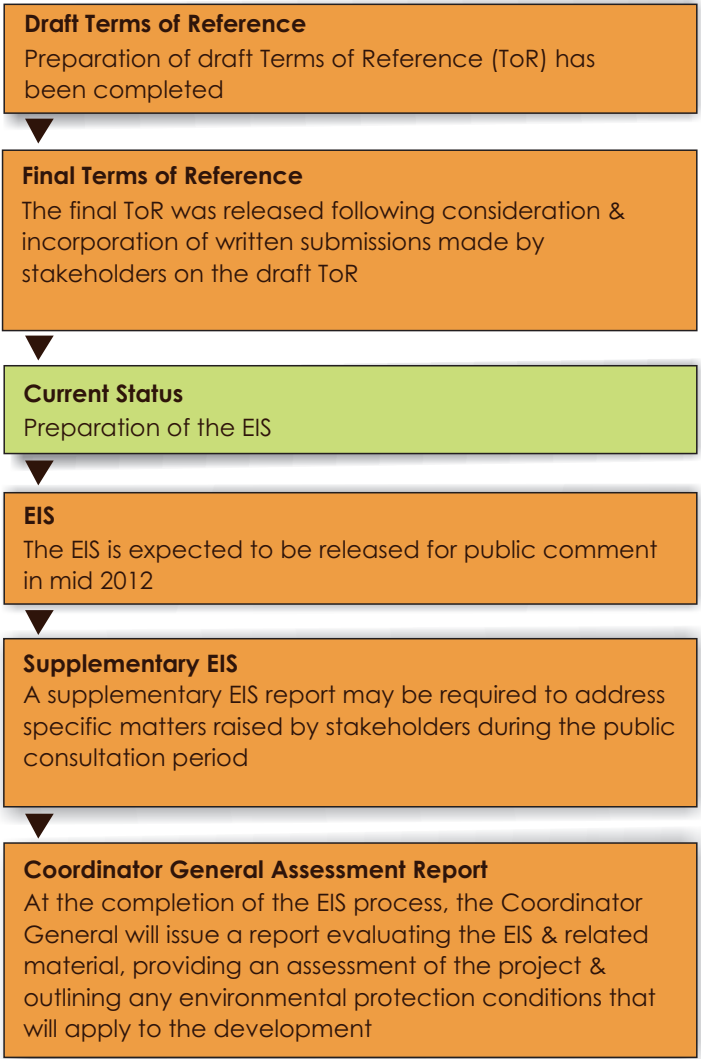
The South Galilee Coal Project (SGCP) is proposed by joint venture participants AMCI (Alpha) Pty Ltd (AMCI) and Alpha Coal Pty Ltd (Alpha Coal), a subsidiary of Bandanna Energy Limited. The SGCP will produce up to 17 Million tonnes per annum (Mtpa) of high volatile, low sulphur thermal coal. The SGCP will target thermal coal using both open cut and underground mining methods.



Public Consultation

A comprehensive public consultation program has been an integral component of the SGCP EIS process and consultation will continue to be undertaken over the life of the project. Consultation has been undertaken with landholders, key stakeholders, government agencies and the broader community.

EIS Process Flowchart



EIS Submission & Review

On completion, the EIS will be submitted to the Office of the Coordinator General(OCG) for initial review and feedback. A public notice will be published in local, regional, state and national newspapers to advise:

- where a copy of the EIS will be available for inspection;
- where a copy of the EIS may be obtained at reasonable cost;
- that submissions may be made to the Coordinator-General about the EIS; and
- the submission period set by the Coordinator-General during which a submission may be made.

An electronic copy of the SGCP EIS will be placed on public display at <http://www.deedi.qld.gov.au/cg/south-galilee-coal-mine.html>

Hard copies of the EIS will be made available for viewing at the following locations:

- **Alpha Library**
- **Jericho Library**
- **State Library of Queensland**

Any person, group or organisation can make a written submission about the SGCP EIS. Such submissions do not have to relate to the whole EIS and may relate to any aspect. Persons making a submission do not have to be an expert in any of the issues assessed in the EIS.

Further information relating to the public submission process can be found at <http://www.deedi.qld.gov.au/cg/eis-review-and-assessment.html>

