



COMMUNITY INFORMATION DAY

AMCI will be holding Community Information sessions at the Alpha Show from 17th - 19th May 2010.

Local community members are encouraged to visit to find out more about the Project.

THE COMMUNITY CONSULTATION PROCESS

Members of the community will be encouraged, at all stages of the EIS process, to register their interest in the SGCP which will enable them to be kept updated with project activities. Please note that employment opportunities are separate from this process and will be advertised when the project is due to commence construction.

A 'Stakeholder' is any person affected or interested in the project. Stakeholder consultation will be undertaken as part of the EIS assessment process to:

- ensure all affected and interested persons are aware of the benefits and impacts of the proposed developments;
- ensure stakeholder concerns and ideas are recorded, considered and implemented in the EIS assessments; and
- inform stakeholders on how their concerns and ideas will be addressed and incorporated into the EIS process.

STUDY PROGRESS

Air and Noise	Detailed assessments of Air and Noise will be completed as part of the EIS process.
Ecology	Baseline studies have been completed for terrestrial and aquatic ecology.
Economic	Detailed assessments of Economic impacts will be completed as part of the EIS process.
Groundwater	A monitoring program is being developed and studies are taking place to ensure this is sufficient.
Social	Detailed assessments of Social impacts will be completed as part of the EIS process.
Soil and Land	Detailed assessments of Soil and Land will be completed as part of the EIS process.
Surface Water	Detailed assessments of Surface water resources will be completed as part of the EIS process.
Traffic and Transport	Detailed assessments of Traffic and Transport impacts will be completed as part of the EIS process.

How to become an interested person

To become an interested person please provide your contact name and address via any of the options provided below.

Contact us:

Postal: South Galilee Coal Project
Stakeholder & Community Engagement Team
Matrixplus Consulting
PO Box 10502, Adelaide St Post Office,
Brisbane QLD 4000

Email: info@southgalilee.com.au

Tel: 1800 214 543
(Freecall in Australia except from mobile phones)

Web: www.southgalilee.com.au



AMCI Company Info

The AMCI Group (AMCI) was founded in 1986 and is a private global mining, investment and trading business operating in the resources industry. AMCI (Alpha) Pty Ltd is the manager of and joint venture partner with Bandanna Energy in the South Galilee Coal Project (SGCP).

AMCI is experienced in coal exploration and mine development, and was instrumental in the development of several mines in Queensland and New South Wales, including Coppabella, Moorvale, Carborough Downs and Glennies Creek.

Please go to www.amcicapital.com for further information about AMCI.

Bandanna Energy Company Info

Bandanna Energy is an ASX listed coal exploration company with tenements in the Bowen and Galilee Basins. Alpha Coal Pty Ltd is a wholly owned subsidiary of Bandanna Energy holding four coal exploration tenements in the south eastern Galilee Basin, referred to as the SGCP.

Please go to www.enterpriseenergy.com.au for more information about Bandanna Energy.



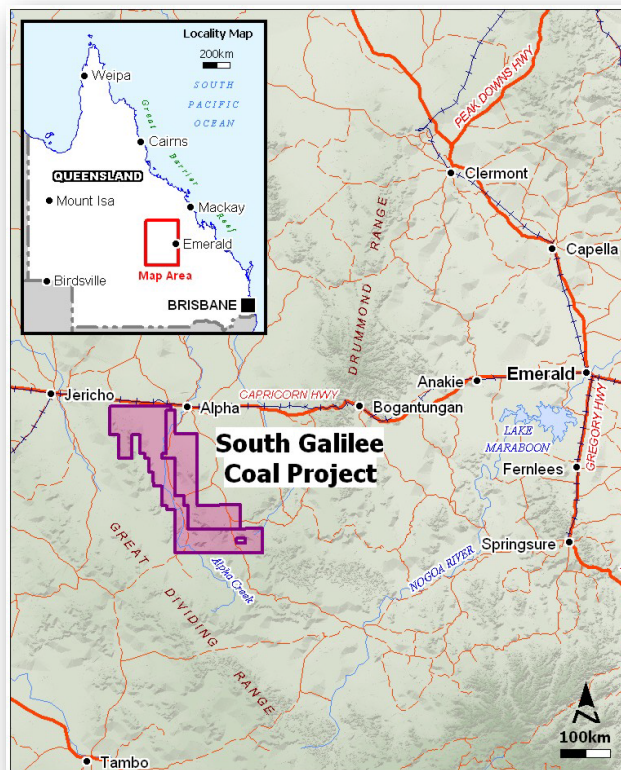
AMCI (Alpha) Pty Ltd (AMCI) and Alpha Coal Pty Ltd (Bandanna Energy), the Proponents, are seeking to establish a new coal mine on two of their exploration tenements near Alpha in the Galilee Basin. The mine will produce up to 20 Million tons per annum (Mtpa) of high volatile, low sulphur thermal coal for export to international markets. The Project is referred to as the South Galilee Coal Project (SGCP).

The SGCP is located south-west of the township of Alpha, approximately 160 km west of Emerald.

The SGCP will target thermal coal at depths suitable for both open cut and underground mining. The currently proposed mine life is 43 years, however the Proponent will continue to explore the tenements areas to further quantify the coal resource and quality to assist in mine planning.

The Proponent is currently undertaking feasibility and environmental assessments with the findings to be incorporated into the project planning process. Specific operational criteria will be determined upon completion of the necessary exploratory, environmental and feasibility assessments and will be fully detailed in the Environmental Impact Statement (EIS) documents.

PROJECT LOCATION



APPROVALS PROCESSES

Federal Approval Process

The Environment Protection and Biodiversity Conservation Act 1999 (EPBC Act 1999) provides the Federal Government with a legal framework to protect and manage nationally and internationally important flora, fauna, ecological communities and heritage places. In compliance with the Act, the Proponent referred the SGCP to the Commonwealth Department of Environment, Water, Heritage and the Arts (DEWHA) for assessment.

The SGCP has been referred to DEWHA under the EPBC Act. A determination on the controlled status will be decided by early June 2010. The State Environmental Impact Assessment (EIA) process, as detailed on the following page, will be required regardless of the outcome.

State Environmental Impact Assessment Process

Given the nature, scale and location of the proposed coal mine, AMCI voluntarily proposed to undertake an EIS under the State Development and Public Works Organisation Act 1971 (SDPWO Act), administered by the Co-ordinator General (CG) of the Queensland Department of Infrastructure and Planning (DIP).

The Project qualifies for 'significant project' status under the SDPWO Act.

A summary of the EIA process is outlined below. Further information on this process can be found on the DIP website under Infrastructure and Projects (www.dip.qld.gov.au).

EIS Process Flowchart

Current Status:

Preparation of draft Terms of Reference (ToR).

ToR

The DIP will release the draft ToR which identifies the specific requirements for the EIS content for public comment. The final ToR will be released following consideration and incorporation of written submissions made by stakeholders.

Draft EIS

The draft EIS is released for public comment.

Supplementary EIS

A supplementary EIS report may be required to address specific matters raised by stakeholders during the public consultation period.

Coordinator General Assessment Report

At the completion of the EIS process, the DIP will issue a report evaluating the EIS and related material, providing an assessment of the project and outlining any environmental protection conditions that will apply to the development.